

Draw a picture of the letter N you liked the most.



ナカカズ

ナカガイド NAKKA GUIDE



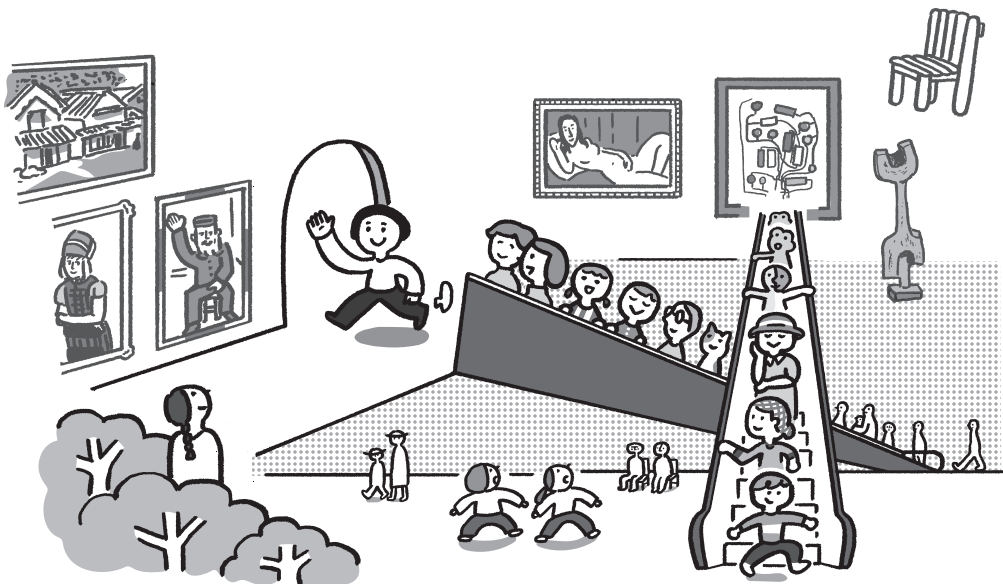
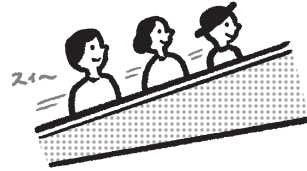
Welcome to NAKKA!

Nakanoshima Museum of Art, Osaka A = NAKKA

Let's find out about NAKKA!

About NAKKA

- NAKKA opened in February 2022.
- It's a big, black, five-story building.
(It's about the same height as a regular 10 - story building)
- The first and second floors are a "public space" where anyone can come and go for free.
There's the museum shop and an interior design shop.
There's also a café-restaurant, and there's a grassy area outdoors on the second floor level.
Everyone can come into the museum, whether or not you've come to see an exhibition.
- The galleries are on the fourth and fifth floors.
To get to these exhibition spaces you ride up a long escalator.
- The exhibitions focus on art and design.



Find the letter N!

"N" is the first letter of "Nakanoshima."

You can find lots of different "Ns" in NAKKA, both small and large.

You might even notice the letter built into the furniture ...

Try and find as many letter Ns as you can as you look around NAKKA.

Then draw a picture of your favorite one!

Can you see the letter N
in the NAKKA logo?



There's space for drawing on the next page. ►

If you think it's an N,
then it is!

